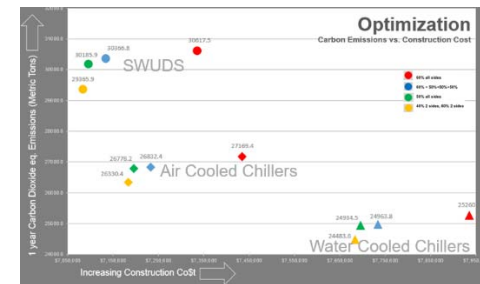
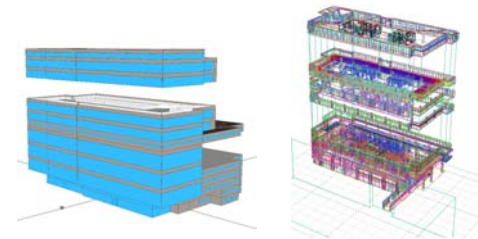


USGBC TEXAS GULF COAST REGION

Starting November 1st, LEED v4 came into effect. To help the building industry get familiar with this new Rating System, USGBC Texas Gulf Coast Region is conducting regional presentations given by subject-matter experts from Gulf Coast region. Topics include Materials, Integrative Process, Energy Modeling, Envelope Commissioning, Daylighting & Views, Water Analysis, LCA & Site Design.

LEED V4 SERIES



ENERGY MODELING

MAY 22ND Kirksey Architecture
6909 Portwest Drive, Houston, 77024

Admission: Free Meeting starts 11:30 am Lunch Sponsor: **Texas Air Systems**

Do project teams need to run energy models in LEED v4 or are there exceptions? What are the LEED Protocols for running energy models? Are energy models applicable only in SD and DD Phases, or can these be used beyond Design Phase? What special considerations are needed in modeling Geothermal Systems ? To answer some of these questions and more, please join Kosuke Kato and Kapil Upadhyaya.

Kosuke Kato is the Senior Energy Modeling Engineer for **CMTA**. He also is the lead mechanical engineer in the CMTA Houston office. Kosuke has been with CMTA for 11 years and has designed and modeled numerous Net-Zero Energy buildings such as Richardsville Elementary School in Bowling Green, KY. This was the first Net-Zero Energy Public School in the US. He is a licensed professional engineer and a LEED AP.

Kapil Upadhyaya is a Senior Associate and Building Performance Analyst at **Kirksey Architecture**. He is a champion of building-physics having performed energy modeling, lighting & daylighting simulations, hygrothermal simulations and airflow simulations for over a 110 projects, 70 of which are LEED buildings. He heads benchmarking efforts in the firm with 5 Measurement & Verification projects for Johnson Space Center and over 10 Post Occupancy Evaluations for schools, offices & community buildings.

USGBC membership renewal available at this event. See link for available opportunities: <http://www.usgbctexas.wildapricot.org/>

